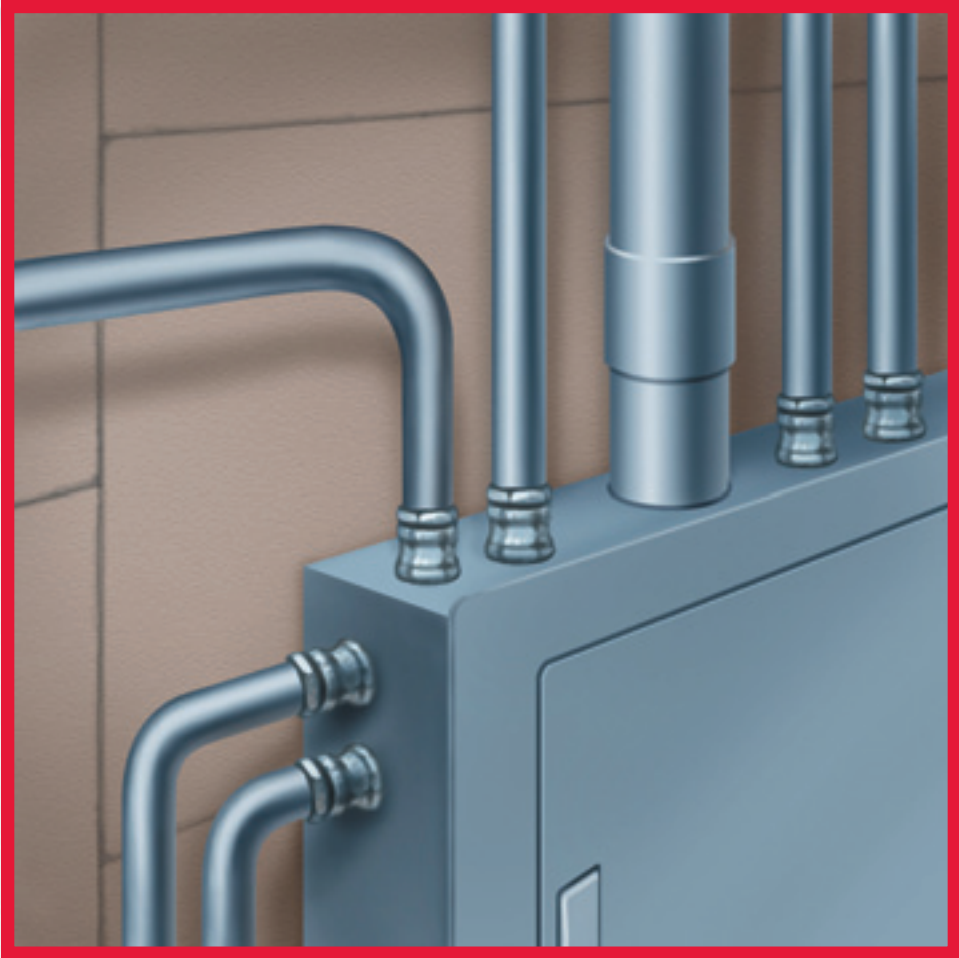


Electrical Conduit and EMT Fittings

Nipples, Elbows and Couplings



Wheatland Tube

JMC STEEL GROUP

Always The Best Fit



Wheatland manufactures a full line of complementary tubular fittings — nipples, elbows, couplings and running thread — made from the same materials as our raceways. RMC nipples are a shorter length of RMC and are threaded on both ends. Elbows are bent sections of conduit or tubing and are an important element of a raceway installation. Like our nipples, our elbows are threaded on both ends. Couplings are ID threaded from metal stock that has its ID sized, so when threaded, it will mate with the OD threads of the conduit. The pitch of conduit threads conforms to the American National Standard for Pipe Threads, General Purpose (Inch), ANSI/ASME B1.20.1. The taper of threads is 3/4 inch per foot (1 in 16).

The Winning Team

When the job needs to be done on time and within budget, rely on Wheatland, the only company in the industry that produces all of its fittings in house. Our in-house, hot-dip galvanizing process is the quality benchmark for the industry.

Most of our fittings are produced in-house, using the latest technology and equipment. This assures a complete quality system for your raceways, from start-to-finish. Experience. Quality. Total in-house capabilities. You and Wheatland. That's *the* winning team.

Specifications

The same quality standards that cover our steel conduit and tubing also cover our nipples, elbows and

couplings. Wheatland's steel tubular fittings are manufactured in accordance with the applicable UL standard, Federal Specifications, and the American National Standards Institute C80 standard. All of our steel Rigid Metal Conduit fittings, RMC/IMC couplings, and Yard-Light elbows are galvanized and conduit threads conform to the American National Standard for Pipe Threads, General Purpose (Inch), ANSI/ASME B1.20.1.

Our aluminum RMC nipples, elbows and couplings adhere to the following standards: UL6A, Federal Specifications WW-C-540c and the American National Standards Institute C80.5.

Our steel RMC nipples, elbows and couplings adhere to the following standards: UL6, Federal Specifications WW-C-581 class 1, type A and the American National Standards Institute C80.1

Our steel IMC nipples and elbows adhere to the following standards: UL 1242, Federal Specifications WW-C-581 class 2, type A and the American National Standards Institute C80.6

Our steel EMT elbows adhere to the following standards: UL797, Federal Specifications WW-C-563 and the American National Standards Institute C80.3

Information on the weights, dimensions and packaging of our fittings are available in our product bulletins. For copies, please contact Wheatland's Marketing Department at info@wheatland.com.

Rigid Steel Conduit Nipples - Galvanized

Weights and Packaging

| Length | CLOSE | | | 1½" | | 2" | | 2½" | | 3" | | 3½" | |
|------------|---------------|--------------------------|---------------------|--------------------------|---------------------|--------------------------|---------------------|--------------------------|---------------------|--------------------------|---------------------|--------------------------|---------------------|
| Trade Size | Length* (in.) | Standard Carton Quantity | Weight Per 100 lbs. | Standard Carton Quantity | Weight Per 100 lbs. | Standard Carton Quantity | Weight Per 100 lbs. | Standard Carton Quantity | Weight Per 100 lbs. | Standard Carton Quantity | Weight Per 100 lbs. | Standard Carton Quantity | Weight Per 100 lbs. |
| ½ | 1½ | 25 | 6 | 25 | 8 | 25 | 12 | 25 | 15 | 25 | 19 | 25 | 22 |
| ¾ | 1¾ | 25 | 9 | 25 | 9 | 25 | 14 | 25 | 19 | 25 | 24 | 25 | 28 |
| 1 | 1½ | 25 | 16 | -- | -- | 25 | 22 | 25 | 28 | 25 | 36 | 25 | 43 |
| 1¼ | 1¾ | 25 | 22 | -- | -- | 25 | 28 | 25 | 37 | 25 | 47 | 25 | 55 |
| 1½ | 1¾ | 25 | 28 | -- | -- | 25 | 34 | 25 | 44 | 25 | 56 | 25 | 68 |
| 2 | 2 | 25 | 44 | -- | -- | -- | -- | 25 | 59 | 25 | 72 | 25 | 88 |
| 2½ | 2¾ | B | 84 | -- | -- | -- | -- | -- | -- | B | 100 | B | 120 |
| 3 | 2¾ | B | 118 | -- | -- | -- | -- | -- | -- | B | 130 | B | 157 |
| 3½ | 2¾ | B | 160 | -- | -- | -- | -- | -- | -- | -- | -- | -- | -- |
| 4 | 2¾ | B | 180 | -- | -- | -- | -- | -- | -- | -- | -- | -- | -- |
| 5 | 3 | B | 240 | -- | -- | -- | -- | -- | -- | -- | -- | -- | -- |
| 6 | 3½ | B | 350 | -- | -- | -- | -- | -- | -- | -- | -- | -- | -- |

*Length reference is for Close Nipples only.

Weights and Packaging

| Length | 4" | | 5" | | 6" | | 8" | | 10" | | 12" | |
|------------|--------------------------|---------------------|--------------------------|---------------------|--------------------------|---------------------|--------------------------|---------------------|--------------------------|---------------------|--------------------------|---------------------|
| Trade Size | Standard Carton Quantity | Weight Per 100 lbs. | Standard Carton Quantity | Weight Per 100 lbs. | Standard Carton Quantity | Weight Per 100 lbs. | Standard Carton Quantity | Weight Per 100 lbs. | Standard Carton Quantity | Weight Per 100 lbs. | Standard Carton Quantity | Weight Per 100 lbs. |
| ½ | 25 | 26 | 25 | 33 | 25 | 40 | 25 | 54 | 25 | 68 | 25 | 82 |
| ¾ | 25 | 34 | 25 | 43 | 25 | 52 | 25 | 73 | 25 | 89 | 25 | 109 |
| 1 | 25 | 49 | 25 | 64 | 25 | 78 | 25 | 109 | 25 | 138 | 25 | 166 |
| 1¼ | 25 | 66 | 25 | 84 | 25 | 100 | 25 | 136 | 25 | 176 | 25 | 216 |
| 1½ | 25 | 80 | 25 | 103 | 25 | 122 | 25 | 170 | 25 | 216 | 12 | 260 |
| 2 | 25 | 103 | 25 | 132 | 25 | 160 | 12 | 220 | 12 | 285 | 12 | 335 |
| 2½ | B | 150 | B | 197 | B | 240 | B | 329 | B | 422 | B | 505 |
| 3 | B | 200 | B | 260 | B | 300 | B | 411 | B | 528 | B | 630 |
| 3½ | B | 240 | B | 320 | B | 373 | B | 510 | B | 655 | B | 785 |
| 4 | B | 285 | B | 380 | B | 440 | B | 600 | B | 775 | B | 925 |
| 5 | -- | -- | B | 480 | B | 600 | B | 825 | B | 1055 | B | 1260 |
| 6 | -- | -- | B | 660 | B | 820 | B | 1125 | B | 1440 | B | 1720 |

Prices are available upon request for nipples in lengths longer than 12" or with special threading requirements.

Steel Conduit

EMT Elbows 90°

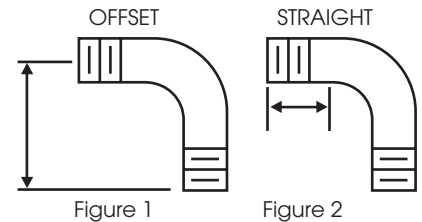
| Trade Size | Min. UL Radius (in.) | Offset | Weight lbs.** | | Std. Carton Qty. |
|------------|----------------------|--------|---------------|----------|------------------|
| | | | Per 100 | Per Ctn. | |
| ½ | 4 | 6¼ | 26 | 13 | 50 |
| ¾ | 4½ | 7⅞ | 46 | 23 | 50 |
| 1 | 5¾ | 9¼ | 92 | 23 | 25 |
| 1¼ | 7¼ | 10½ | 135 | 27 | 20 |
| 1½ | 8¼ | 12⅝ | 200 | 30 | 15 |
| 2 | 9½ | 14¼ | 280 | 28 | 10 |
| 2½* | 10½ | 18⅞ | 500 | 250 | 50 |
| 3* | 13 | 20 | 750 | 375 | 50 |
| 3½* | 15 | 23¾ | 1014 | 355 | 35 |
| 4* | 16 | 26⅞ | 1300 | 455 | 35 |

*Trade sizes 2½ and larger shipped in palletized cartons or bulk.
 **Weights for Standard 90° elbows shown above are approximate.
 To estimate weight for 60°, deduct 10%; for 45°, deduct 15%; for 30°, deduct 20%. Underwriters Laboratories, Inc. UL 797, American National Standards Institute, C80.3.

Rigid/IMC Couplings - Galvanized Steel

| Trade Size | Outside Diameter | Length* (in.) | Weight lbs.** | | Std. Carton Qty. |
|------------|------------------|---------------------------------|---------------|----------|------------------|
| | | | Per 100 | Per Ctn. | |
| ½ | 1.010 | 1⅝ | 12 | 12 | 100 |
| ¾ | 1.250 | 1 ⁴¹ / ₆₄ | 18 | 9 | 50 |
| 1 | 1.525 | 1 ³¹ / ₃₂ | 30 | 9 | 30 |
| 1¼ | 1.869 | 2⅝ | 37 | 9 | 25 |
| 1½ | 2.155 | 2⅞ | 52 | 13 | 25 |
| 2 | 2.650 | 2⅞ | 72 | 15 | 20 |
| 2½ | 3.250 | 3⅞ | 170 | 41 | 24 |
| 3 | 3.87 | 3⅞ | 210 | 34 | 16 |
| 3½ | 4.500 | 3 ¹³ / ₃₂ | 340 | 41 | 12 |
| 4 | 4.875 | 3 ³³ / ₆₄ | 300 | 30 | 10 |
| 5 | 6.000 | 3 ⁶¹ / ₆₄ | 475 | Bulk | Bulk |
| 6 | 7.200 | 4¼ | 765 | Bulk | Bulk |

Manufactured to UL Specifications.
 *Minimum dimensions per UL 6.



Rigid Steel Conduit Running Thread Pipe

| Trade Size | Feet Per Carton | Weight lbs.** | |
|------------|-----------------|---------------|----------|
| | | Per 100 Ft. | Per Ctn. |
| ½ | 102' | 18 | 19 |
| ¾ | 102' | 29 | 30 |
| ¾ | 102' | 42 | 43 |
| ½ | 60' | 62 | 37 |
| ¾ | 75' | 85 | 64 |
| 1 | 60' | 103 | 62 |
| 1¼ | 36' | 141 | 51 |
| 1½ | 30' | 180 | 54 |
| 2 | 24' | 249 | 60 |
| 2½ | 12' | 383 | 46 |
| 3 | 9' | 496 | 45 |
| 3½ | 6' | 631 | 38 |
| 4 | 6' | 722 | 43 |

3 Foot Lengths: TYPE "C" Galvanized, Electro Plated Threads.

Rigid Steel Conduit - Galvanized Elbows 90°

| Trade Size | Min. UL Radius (in.) | Offset Fig. 1 | Straight Fig. 2 | Weight lbs.** | | Std. Carton Qty. |
|------------|----------------------|----------------------------------|-----------------|---------------|----------|------------------|
| | | | | Per 100 | Per Ctn. | |
| ½ | 4 | 6⅞ | 1¼ | 70 | 35 | 50 |
| ¾ | 4½ | 7⅞ | 2¼ | 112 | 56 | 50 |
| 1 | 5¾ | 9½ | 2¼ | 192 | 48 | 25 |
| 1¼ | 7¼ | 11⅞ | 3 | 320 | 64 | 20 |
| 1½ | 8¼ | 12 ¹³ / ₁₆ | 3½ | 413 | 62 | 15 |
| 2 | 9½ | 15½ | 4 | 670 | 67 | 10 |
| 2½* | 10½ | 19¼ | 4¾ | 1200 | 600 | 50 |
| 3* | 13 | 21½ | 6 | 1900 | 665 | 35 |
| 3½* | 15 | 24½ | 5½ | 2800 | 700 | 25 |
| 4* | 16 | 25½ | 5¾ | 3100 | 775 | 25 |
| 5* | 24 | 37⅞ | 8⅞ | 6800 | Bulk | Bulk |
| 6* | 30 | 49½ | 13¼ | 11400 | Bulk | Bulk |

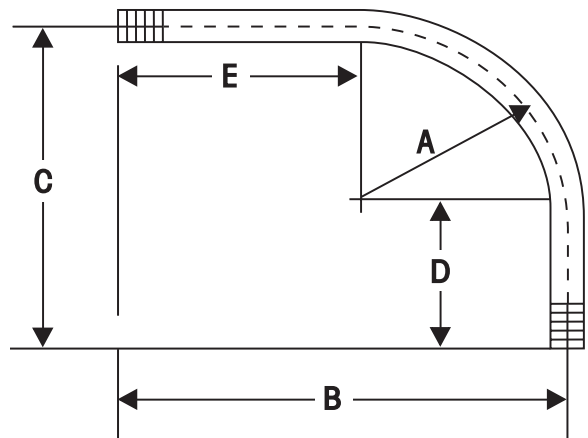
*Sizes 2½ and larger shipped in palletized cartons or bulk. Palletized and Bulk elbows supplied with a thread protector on each end and UL label affixed.
 **Weights for Standard 90° elbows shown above are approximate. To estimate weight for 60°, deduct 10%; for 45°, deduct 15%; for 30°, deduct 20%.

Rigid Steel Conduit Elbows - Galvanized

Special Large Radius 90°

| Trade Size | 12" Radius | 15" Radius | 18" Radius | 24" Radius | 30" Radius | 36" Radius | 42" Radius | 48" Radius |
|------------|---------------------|-----------------|------------|-----------------|-----------------|------------|------------|------------|
| | Weight Each In Lbs. | | | | | | | |
| 1 | 4 | 6 | 5 | 6 | 9 | 9 | 12 | 13 |
| 1¼ | 6 | 7 | 7 | 9 | 12 | 13 | 16 | 18 |
| 1½ | 8 | 9 | 10 | 11 | 15 | 16 | 19 | 21 |
| 2 | 10 | 10 | 11 | 14 | 20 | 22 | 24 | 26 |
| 2½ | 15 | 19 | 18 | 23 | 27 | 32 | 39 | 44 |
| 3 | -- | 25 | 23 | 32 | 37 | 45 | 52 | 57 |
| 3½ | -- | Standard Radius | 31 | 35 | 42 | 54 | 62 | 69 |
| 4 | -- | -- | 38 | 45 | 54 | 64 | 73 | 81 |
| 5 | -- | -- | -- | Standard Radius | 85 | 94 | 100 | 120 |
| 6 | -- | -- | -- | -- | Standard Radius | 131 | 140 | 160 |

*Weights for Special Large Radius 90° elbows shown above are approximate. To estimate weight for 60°, deduct 10%; for 45°, deduct 15%; for 30°, deduct 20%. Underwriters Laboratories, Inc. No. UL6, American National Standards Institute, C80.1.



Yard-Light Elbows - Galvanized

| Trade Size | Pieces Per Carton | Weight lbs.** | |
|------------|-------------------|---------------|----------|
| | | Per 100 Pcs. | Per Ctn. |
| ½ | 25 | 150 | 38 |
| ¾ | 25 | 202 | 51 |
| 1 | 25 | 316 | 79 |
| 1¼ | 10 | 477 | 48 |
| 1½ | 5 | 609 | 30 |
| 2 | Bulk | 911 | -- |
| 2½ | Bulk | 1530 | -- |
| 3 | Bulk | 2279 | -- |
| 3½ | Bulk | 3082 | -- |
| 4 | Bulk | 3799 | -- |

Dimensions of Yard-Light Elbows - Galvanized

| Trade Size | 1/2 | 3/4 | 1 | 1¼ | 1½ | 2 | 2½ | 3 | 3½ | 4 |
|------------|-----|-----|-----|-----|-----|-----|-----|-----|-----|----|
| A | 4 | 4½ | 5¼ | 7¼ | 8¼ | 9½ | 10½ | 13 | 15 | 16 |
| B | 18 | 18 | 18 | 19¼ | 20½ | 21½ | 22½ | 25 | 27 | 28 |
| C | 6⅞ | 6¾ | 8⅝ | 10¼ | 11⅝ | 14½ | 16 | 19¼ | 22¾ | 24 |
| D | 2⅞ | 2¼ | 2⅞ | 3¼ | 3⅞ | 5 | 5½ | 6¼ | 7¼ | 8 |
| E | 14 | 13½ | 12¼ | 12¼ | 12¼ | 12 | 12 | 12 | 12 | 12 |

INTERMEDIATE METAL CONDUIT ELBOWS

ALL DIMENSIONS PROVIDED ARE FOR DESCRIPTIVE PURPOSES ONLY

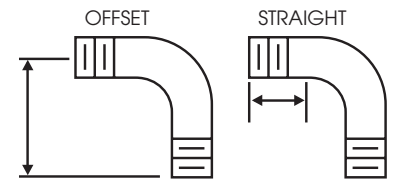


Figure 1

Figure 2

IMC Elbows 90°

| Trade Size | Radius ** | Offset Fig. 1 | Straight Fig. 2 | Weight lbs.** | | Std. Carton |
|------------|-----------|---------------|-----------------|---------------|----------|-------------|
| | | | | Per 100 | Per Ctn. | |
| ½ | 4" | 6¾" | 1¾" | 52 | 26 | 50 |
| ¾ | 4½" | 7⅝" | 2¼" | 82 | 41 | 50 |
| 1 | 5¾" | 8⅞" | 2¾" | 136 | 34 | 25 |
| 1¼ | 7¼" | 11½" | 2⅝" | 225 | 45 | 20 |
| 1½ | 8¼" | 12¾" | 2⅝" | 306 | 46 | 15 |
| 2 | 9½" | 15¼" | 4" | 480 | 48 | 10 |
| *2½ | 10½" | 19⅛" | 4⅜" | 900 | 450 | 50 |
| *3 | 13" | 24½" | 7¾" | 1500 | 525 | 35 |
| *3½ | 15" | 25¼" | 6¾" | 1800 | 450 | 25 |
| *4 | 16" | 25¾" | 5½" | 2000 | 500 | 25 |

*Trade sizes 2½ and larger shipped in palletized cartons or bulk. Palletized and Bulk elbows supplied with a thread protector on each end and UL label affixed.

**Minimum dimension per UL1242.

IMC Elbows - Galvanized Special Large Radius 90°

| Trade Size | 12" Radius | 15" Radius | 18" Radius | 24" Radius | 30" Radius | 36" Radius | 42" Radius | 48" Radius |
|------------|---------------------|-----------------|------------|------------|------------|------------|------------|------------|
| | Weight Each In Lbs. | | | | | | | |
| 1 | 3 | 4 | 5 | 6 | 7 | 8 | 9 | 10 |
| 1¼ | 4 | 5 | 6 | 7 | 9 | 10 | 11 | 12 |
| 1½ | 5 | 6 | 7 | 9 | 10 | 12 | 14 | 15 |
| 2 | 7 | 8 | 9 | 11 | 13 | 15 | 17 | 19 |
| 2½ | 11 | 13 | 15 | 18 | 21 | 24 | 28 | 31 |
| 3 | -- | 16 | 18 | 22 | 26 | 30 | 34 | 38 |
| 3½ | -- | Standard Radius | 320 | 25 | 30 | 34 | 39 | 44 |
| 4 | -- | -- | 23 | 29 | 34 | 38 | 44 | 49 |

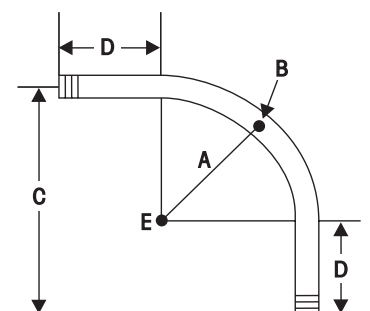
*Weights for Standard and Special Large Radius 90° elbows are approximate. To estimate weight for 60°, deduct 10%; for 45°, deduct 15%; for 30°, deduct 20%. Underwriters Laboratories, Inc. No. 1242, American National Standards Institute, C80.6 where applicable.

Dimensions of Special Large Radius 90° Elbows*

| Trade Size | 1-2½ | 1-3 | 1-4 | 1-4 | 1-5 | 1-6 | 1-6 | 1-6 |
|----------------------|------|------|------|-------|------|-------|------|------|
| When Radius "A" is: | 12" | 15" | 18" | 24" | 30" | 36" | 42" | 48" |
| Offset "C" is: | 1'9" | 2'0" | 2'4" | 2'11" | 3'5" | 3'11" | 4'6" | 5'0" |
| Straight End "D" is: | 9" | 9" | 10" | 11" | 11" | 11" | 12" | 12" |
| Length Unbent is: | 3'0" | 3'6" | 4'0" | 4'11" | 5'9" | 6'6" | 7'6" | 8'4" |

Measuring Special Radius Elbows

Locate center of Elbow B. Subtract straight section D from each end and final find point E. Radius A is the distance between B and E.



Offset C is measured as shown.

*Dimensions apply to 90° elbows only. Inquire for other Radii.

ALUMINUM RIGID CONDUIT ACCESSORIES

ALL DIMENSIONS PROVIDED ARE FOR DESCRIPTIVE PURPOSES ONLY

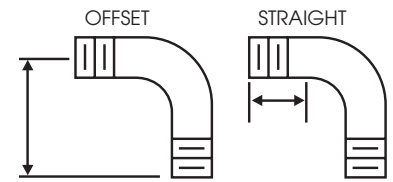


Figure 1

Figure 2

Rigid Coupling - Aluminum

| Trade Size | Outside Diameter | Length ** | Weight lbs.** | | Std. Carton Qty. |
|------------|------------------|-----------|---------------|----------|------------------|
| | | | Per 100 | Per Ctn. | |
| 1/2 | 1.078" | 1 1/8" | 6 | 6 | 100 |
| 3/4 | 1.328" | 1 1/8" | 9 | 5 | 50 |
| 1 | 1.562" | 2" | 13 | 4 | 30 |
| 1 1/4 | 1.953" | 2 1/8" | 19 | 5 | 25 |
| 1 1/2 | 2.219" | 2 1/8" | 23 | 6 | 25 |
| 2 | 2.750" | 2 1/2" | 35 | 7 | 20 |
| 2 1/2 | 3.281" | 3 1/8" | 68 | 16 | 24 |
| 3 | 3.812" | 3 1/4" | 91 | 15 | 16 |
| 3 1/2 | 4.438" | 3 3/8" | 108 | 13 | 12 |
| 4 | 5.000" | 3 1/2" | 142 | 14 | 10 |
| 5 | 6.219" | 3 3/4" | 242 | -- | Bulk |
| 6 | 7.312" | 4" | 320 | -- | Bulk |

Couplings manufactured to UL Specifications
 **Minimum dimension per UL 6A.

Rigid Aluminum Conduit Elbows 90°

| Trade Size | Radius ** | Offset Fig. 1 | Length Fig. 2 | Weight lbs.** | | Std. Carton Qty. |
|------------|-----------|---------------|---------------|---------------|----------|------------------|
| | | | | Per 100 | Per Ctn. | |
| 1/2 | 4" | 6 3/8" | 1 3/4" | 26 | 13 | 50 |
| 3/4 | 4 1/2" | 7 7/8" | 2 1/4" | 40 | 20 | 50 |
| 1 | 5 3/4" | 9 1/2" | 2 1/4" | 72 | 18 | 25 |
| 1 1/4 | 7 1/4" | 11 3/8" | 3" | 105 | 21 | 20 |
| 1 1/2 | 8 1/4" | 12 13/16" | 3 1/2" | 153 | 23 | 15 |
| 2 | 9 1/2" | 15 1/2" | 4" | 210 | 21 | 10 |
| *2 1/2 | 10 1/2" | 19 1/4" | 4 3/4" | 500 | 250 | 50 |
| *3 | 13" | 21 1/2" | 6" | 800 | 280 | 35 |
| *3 1/2 | 15" | 24 1/2" | 5 1/2" | 900 | 225 | 25 |
| *4 | 16" | 25 1/2" | 5 3/4" | 1200 | 300 | 25 |
| *5 | 24" | 37 3/8" | 8 1/8" | 2400 | -- | Bulk |
| *6 | 30" | 49 1/2" | 13 1/4" | 3800 | -- | Bulk |

*Trade Sizes 2 1/2 and larger shipped in palletized cartons or bulk. Palletized and Bulk elbows supplied with a thread protector on each end and UL label affixed.
 **Minimum dimension per UL 6A

Rigid Aluminum Conduit Nipples

| Length | CLOSE | | 1 1/2" | | 2" | | 2 1/2" | | 3" | | 3 1/2" | | 4" | | 5" | | |
|--------|------------|---------|-------------|-------------|-------------|-------------|-------------|-------------|-------------|-------------|-------------|-------------|-------------|-------------|-------------|-------------|-----|
| | Trade Size | Length* | Std. Carton | Wt. Per 100 | Std. Carton | Wt. Per 100 | Std. Carton | Wt. Per 100 | Std. Carton | Wt. Per 100 | Std. Carton | Wt. Per 100 | Std. Carton | Wt. Per 100 | Std. Carton | Wt. Per 100 | |
| 1/2 | 1 1/8" | 25 | 2 | 25 | 3 | 25 | 4 | 25 | 5 | 25 | 7 | 25 | 8 | 25 | 9 | 25 | 12 |
| 3/4 | 1 3/8" | 25 | 3 | 25 | 3 | 25 | 5 | 25 | 7 | 25 | 8 | 25 | 10 | 25 | 12 | 25 | 15 |
| 1 | 1 1/2" | 25 | 4 | -- | -- | 25 | 7 | 25 | 8 | 25 | 12 | 25 | 14 | 25 | 16 | 25 | 21 |
| 1 1/4 | 1 5/8" | 25 | 7 | -- | -- | 25 | 10 | 25 | 13 | 25 | 16 | 25 | 20 | 25 | 23 | 25 | 29 |
| 1 1/2 | 1 3/4" | 25 | 10 | -- | -- | 25 | 12 | 25 | 16 | 25 | 20 | 25 | 24 | 25 | 28 | 25 | 36 |
| 2 | 2" | 25 | 16 | -- | -- | -- | -- | 25 | 22 | 25 | 27 | 25 | 32 | 25 | 38 | 25 | 48 |
| 2 1/2 | 2 1/2" | 12 | 22 | -- | -- | -- | -- | -- | -- | 10 | 30 | 10 | 39 | 10 | 47 | 12 | 64 |
| 3 | 2 5/8" | 12 | 24 | -- | -- | -- | -- | -- | -- | 10 | 42 | 10 | 53 | 10 | 64 | 10 | 86 |
| 3 1/2 | 2 3/4" | 12 | 42 | -- | -- | -- | -- | -- | -- | -- | -- | -- | -- | 10 | 75 | 10 | 101 |
| 4 | 2 7/8" | 12 | 51 | -- | -- | -- | -- | -- | -- | -- | -- | -- | -- | 10 | 87 | 10 | 118 |
| 5 | 3" | Bulk | 71 | -- | -- | -- | -- | -- | -- | -- | -- | -- | -- | -- | -- | Bulk | 155 |
| 6 | 3 1/8" | Bulk | 105 | -- | -- | -- | -- | -- | -- | -- | -- | -- | -- | -- | -- | Bulk | 208 |

*Length reference is for Close Nipples only

Rigid Aluminum Conduit Nipples

| Length | 6" | | 8" | | 10" | | 12" | |
|--------|------------|-------------------|-------------------|-------------------|-------------------|-------------------|-------------------|-----|
| | Trade Size | Std. Ctn. Per 100 | Std. Ctn. Per 100 | Std. Ctn. Per 100 | Std. Ctn. Per 100 | Std. Ctn. Per 100 | Std. Ctn. Per 100 | |
| 1/2 | 25 | 14 | 25 | 19 | 25 | 24 | 25 | 29 |
| 3/4 | 25 | 18 | 25 | 25 | 25 | 31 | 25 | 38 |
| 1 | 25 | 26 | 25 | 36 | 25 | 45 | 25 | 55 |
| 1 1/4 | 25 | 36 | 25 | 49 | 25 | 62 | 25 | 75 |
| 1 1/2 | 25 | 44 | 25 | 59 | 25 | 74 | 25 | 90 |
| 2 | 25 | 58 | 12 | 78 | 12 | 100 | 12 | 120 |
| 2 1/2 | 12 | 80 | 10 | 114 | 5 | 148 | 5 | 180 |
| 3 | 10 | 108 | 10 | 152 | 5 | 196 | 5 | 240 |
| 3 1/2 | 5 | 128 | 5 | 180 | 5 | 234 | 5 | 286 |
| 4 | 5 | 149 | 5 | 212 | 5 | 274 | 5 | 336 |
| 5 | Bulk | 197 | Bulk | 281 | Bulk | 366 | Bulk | 450 |
| 6 | Bulk | 263 | Bulk | 372 | Bulk | 481 | Bulk | 591 |

Rigid Aluminum Conduit Special Large Radius 90° Elbows

| Trade Size | 12" | 15" | 18" | 24" | 30" | 36" | 42" | 48" |
|------------|--------|-----------------|--------|-----------------|-----------------|--------|--------|--------|
| | Radius | Radius | Radius | Radius | Radius | Radius | Radius | Radius |
| 1 | 1 | 2 | 2 | 3 | 3 | 4 | 4 | 5 |
| 1 1/4 | 2 | 3 | 3 | 3 | 4 | 5 | 6 | 6 |
| 1 1/2 | 3 | 3 | 4 | 4 | 5 | 6 | 7 | 8 |
| 2 | 4 | 3 | 4 | 5 | 7 | 8 | 9 | 10 |
| 2 1/2 | 6 | 7 | 6 | 8 | 10 | 12 | 14 | 16 |
| 3 | -- | 9 | 8 | 11 | 13 | 16 | 18 | 21 |
| 3 1/2 | -- | Standard Radius | 11 | 14 | 16 | 19 | 22 | 25 |
| 4 | -- | -- | 14 | 16 | 19 | 23 | 26 | 29 |
| 5 | -- | -- | -- | Standard Radius | 29 | 34 | 37 | 44 |
| 6 | -- | -- | -- | -- | Standard Radius | 42 | 49 | 58 |

*WEIGHTS for Standard and Special Large Radius 90° elbows are approximate. To estimate weight for 60°, deduct 10%; for 45°, deduct 15%; for 30° deduct 20%. Aluminum nipples, elbows and couplings are manufactured in conformance to Underwriters Laboratories, Inc. Standard UL 6A and American National Standards Institute ANSI C80.5.



JMC Steel Group
Pipe and Tube Solutions

Corporate Office

3201 Enterprise Pkwy., Ste. 150,
Beechwood, OH 44122-7329
Ph: (216) 910-3700



Wheatland Tube
JMC STEEL GROUP

Wheatland Tube

700 South Dock Street,
Sharon, PA 16146
Ph: (800) 257-8182
Fax: (724) 346-7260
info@wheatland.com

Wheatland produces a full line of listed electrical conduit, EMT and tubular fittings. We supply Steel and Aluminum Rigid Metal Conduit (RMC), Steel Intermediate Metal Conduit (IMC) and Steel Electrical Metallic Tubing (EMT). We also manufacture a full line of complementary tubular fittings made from the same materials as our raceways — nipples, elbows, couplings and running thread. (See Wheatland's individual product literature for specific product details.)

All Wheatland manufacturing locations' quality management systems are certified to the ISO 9001:2008 requirements.

For more information contact Wheatland's Electrical Sales Department at 800-257-8182, email: info@wheatland.com or visit our website at www.wheatland.com.



Made in U.S.A.